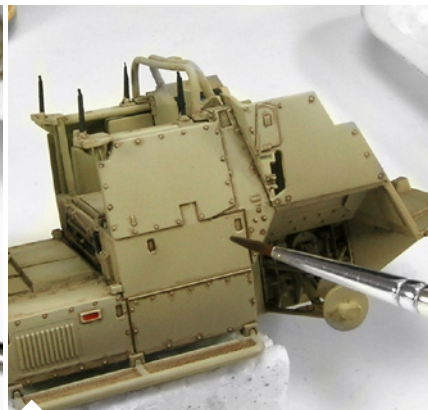
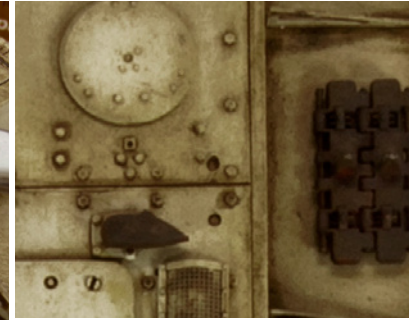




## AK 121 OIF & OEF WASH

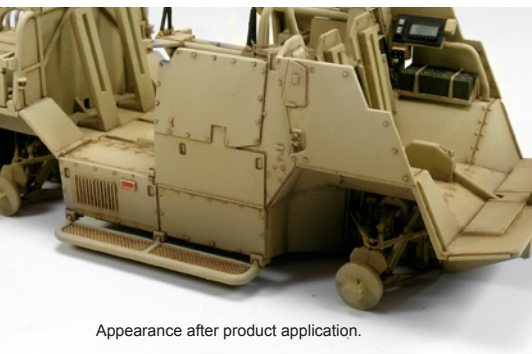
The perfect colour for a wash in modern US vehicles OIF and OEF. Just shake well before use and you can apply it directly to your model to create contrast and depth in the details. We recommend that this product is applied to surfaces that have been painted or varnished with acrylic paint.



This wash is ideal for vehicles painted in light sand shades. We apply it straight from the jar in all reliefs and crannies on a glossy surface.

Glossy surfaces allow the wash flow better in the edges and in general around all details and reliefs and thereby achieving the proper depth.

With a fine, clean brush dipped in thinner AK011 White spirit will clean the surface and removing the wash excess.



Appearance after product application.



Other applications of the product.

