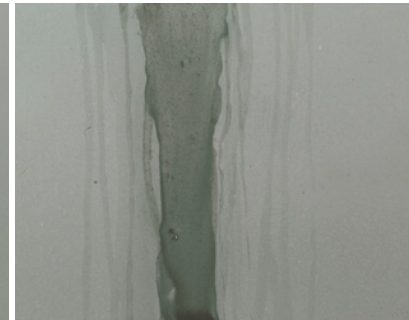
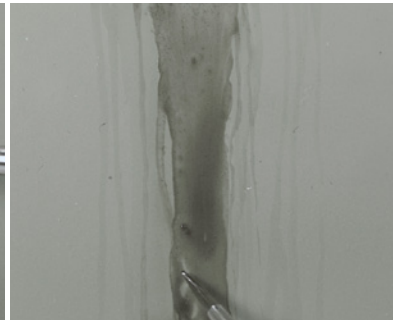
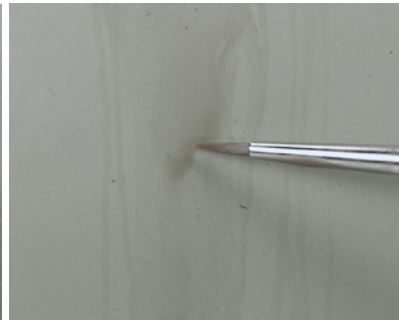
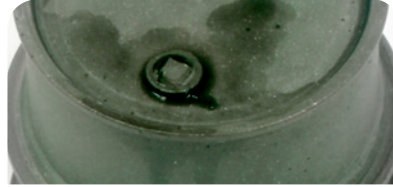




**AK 2039**  
**KEROSENE LEAKS AND STAINS**

Fuel leaks on fuel tanks or around fuel filler caps are quite common. Kerosene has its own specific bluish color and is now available in a ready to use bottle. Perfect to achieve these effects that will add a lot of realism to your model.

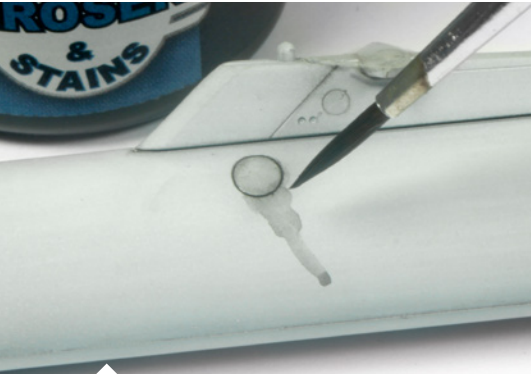


Don't forget to always shake the bottle before use.

It's best to work in layers. Thin the paint with thinner and apply the product with a fine pointed brush.

When the first layer is dry apply the second, using less or no thinner.

Study spills on real vehicles to be able to create a natural effect.



Apply the product with a fine brush and let it dry for a few minutes.

Take another clean brush and manipulate the paint until you are satisfied with the result. The long drying time is another advantage of enamel based paints.

Make sure the streaking run in the direction of airflow.

Clearly showing the effects achieved when working in layers. Combine with other products to create a variety of effects.



Soften the effects by adding some White Spirit to your paint.

