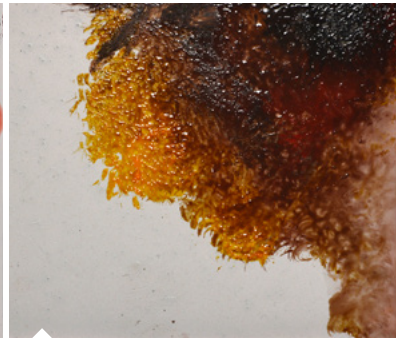




AK 579 ROUNDED WEATHERING BRUSH

Designed to use it with the dry brush technique, mapping techniques, weathering with oils in horizontal areas and general base paint coats.



For the mapping technique place oil or acrylic paints on a surface.

With little strokes start blending the different shades, without mixing them completely.

The effect achieved gives us a texture we can control.

It can be applied in vehicles, as well as spaceships or buildings with very realistic results.



This Brush is also useful to make chipping on certain areas with better control, using chipping liquids or washable paint.

