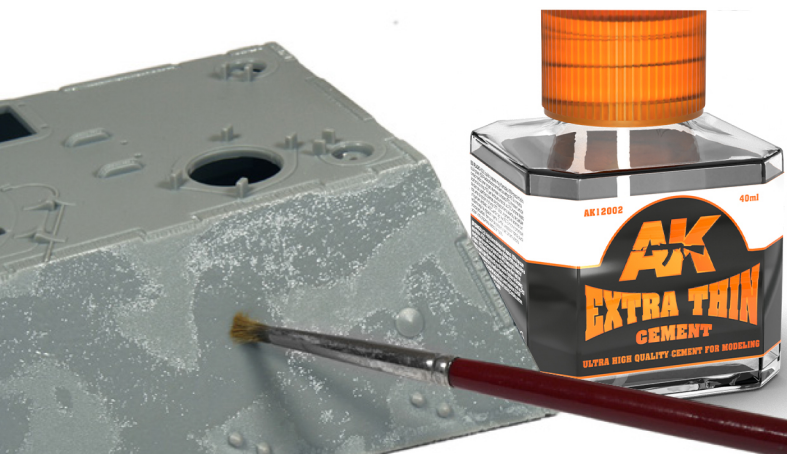


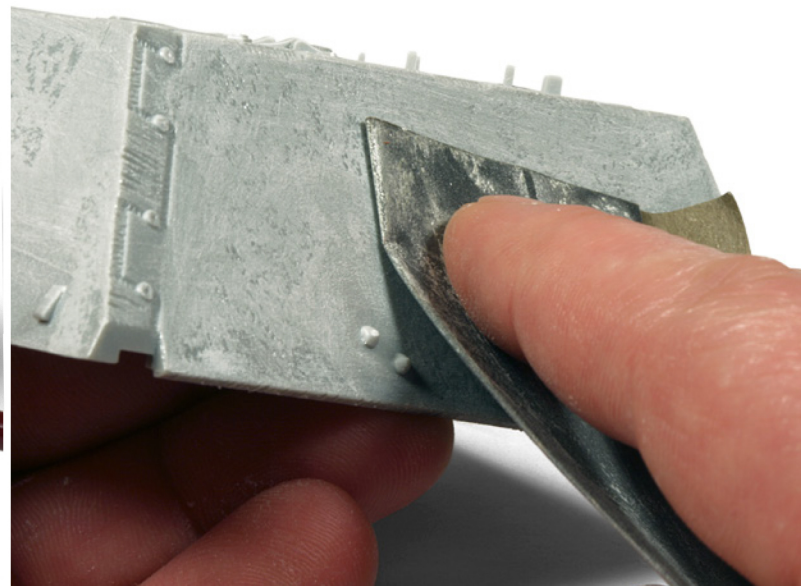
# TIPS AND TRICKS



## HOW TO MAKE A STEEL TEXTURE



Take a stiff brush and apply the plastic glue on your model in a dabbing manner. After a few seconds the glue start to melt the upper layer of the plastic and by dabbing it in an irregular pattern the texture will appear.



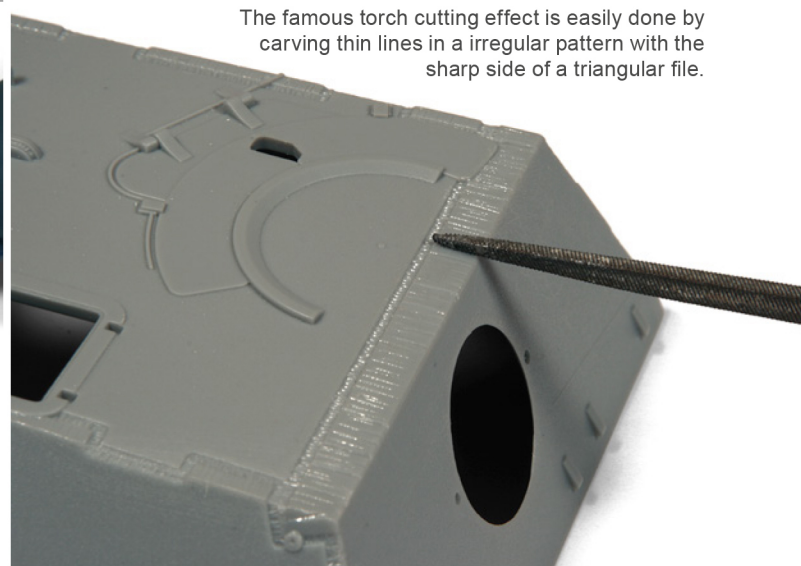
When after a couple of hours the glue is dry you can slightly sand the surface with a fine grid sanding paper.



Install a small round headed burr in a motor tool and tap at low speed against the plastic, in a very irregular pattern. This way you will create a very irregular and uneven surface on the plastic.



With a nylon brush placed in your motor tool set at medium speed you can remove any residu from the previous process.



The famous torch cutting effect is easily done by carving thin lines in a irregular pattern with the sharp side of a triangular file.